





# TOUGHBOOK G1

## LIGHTWEIGHT, FULLY RUGGED WINDOWS 10 PRO TABLET WITH 10.1" NEXT GENERATION OUTDOOR FULLHD DISPLAY

The fully rugged TOUGHBOOK G1 tablet sets the new benchmark for outdoor viewable tablets making it ideal for field workforces in outdoor scenarios. With its capacitive, 10-finger multi-touch display and digitizer pen and flexible configurable ports this Windows 10 Pro device can be used to view high definition documentation and images in the field whilst benefitting from connectivity options to ensure data is always available when needed. The flexible configuration port gives business users the legacy port options they require in a compact, fully rugged and lightweight form factor.

- Intel® Core™ i5-7300U vPro™ Processor
- Windows 10 Pro
- Intel® HD Graphics 620
- Next generation IPSa outdoor display technology
- 10.1" high brightness WUXGA (1920x1200) display (up to 800cd/m2)
- Capacitive 10 finger multi-touchscreen + digitizer
- 180 cm drop resistant\*
- Water and dust resistant (IP65)\*
- Up to 11 hours battery life
- User exchangeable battery
- Optional Hot swap function
- Flexible configuration port (serial, LAN, micro SD, USB 2.0 or Thermal by FLIR)
- Lightweight design - weights approx. 1,1kg

\* Tested by an independent third party lab following MIL-STD-810G and IEC60529, Sections 13.4, 13.6.2, 14.2.5 and 14.3

*All technical specifications are subject to change without notice.*

# TOUGHBOOK G1 ACCESSORY ECOSYSTEM



All accessories in this guide are fully tested and certified in the Panasonic factory by Panasonic engineers

## DOCKING SOLUTIONS

### TOUGHBOOK G1 Desktop Cradle

Size: 31.0 x 23.0 x 17.2 cm

Weight: 1.5 kg

Part Nos:

- FZ-VEBG11AU HDMI and VGA can be used simultaneously.



*All technical specifications are subject to change without notice.*



## DOCKING SOLUTIONS

### TOUGHBOOK G1 Slim Vehicle Dock

Ports:

- Serial; VGA; HDMI; 2 x USB 3.0; LAN; 16V DC-in
- Option dual antenna pass-through
- VESA 75 mounting pattern
- Accommodate standard device only

Size: 285 x 237 x 65 mm / 11.2 x 9.3 x 2.6"

Weight: 1.13 kg / 2.5 lb

Part Nos:

- PCPE-GJG1SD1 with antenna pass-through
- PCPE-GJG1SD2 without antenna pass-through
- PCPE-GJG1SD3 no electronics

\*Width measurement includes locking device



### TOUGHBOOK G1 Standard Vehicle Dock

Ports:

- Serial; VGA; HDMI; 2 x USB 3.0; LAN; 16V DC-in
- Option dual antenna pass-through
- VESA 75 mounting pattern
- Non-electronic versions available

Size: 285 x 251 x 99 mm

Weight: 0.91 kg

Part Nos (Docks with electronics):

- PCPE-GJG1V01 Keyed Alike without antenna pass-through
- PCPE-GJG1V02 Keyed Alike with antenna pass-through

Part Nos (Docks without electronics):

- PCPE-GJG1V05 Keyed Alike



### TOUGHBOOK G1 Vehicle Dock

Ports:

- Serial; VGA; HDMI; 2 x USB 3.0; LAN; 16V DC-in
- Option dual antenna pass-through
- VESA 75 mounting pattern

Size: 255 x 289 x 111 mm / 10.0" x 11.4" x 4.4"

Weight: 1.23 kg / 2.7 lb

Part Nos:

- PCPE-HAVG103 Keyed Alike without antenna pass-through
- PCPE-HAVG104 Keyed alike with antenna pass-through



All technical specifications are subject to change without notice.

## CARRYING SOLUTIONS

### TOUGHBOOK G1 X-Strap

Size: 287 x 216 x 41 mm /  
11.3 x 8.5 x 1.6"

Weight: 0.14 kg / 0.3 lb

Part no: PCPE-INFG1X1

*Only compatible with small corner guards*



### TOUGHBOOK G1 Replacement Rotating Hand Strap

Corner guards included

Part No: PCPE-FZG1H01



### TOUGHBOOK G1 Always-On

Size: 305 x 216 x 46 mm /  
12.0 x 8.5 x 1.8"

Weight: 0.41 kg / 0.90 lb

Part No: PCPE-INFG1A1

*Compatible with all TOUGHBOOK G1 configurations and both small and large corner guards*

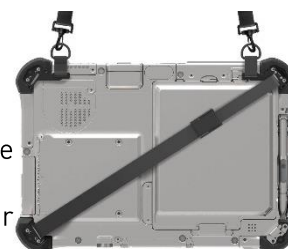


### TOUGHBOOK G1 KV DuraStrap Bundle

Arm strap and shoulder strap for the G1 which can be sanitised. Only fits G1 configuration with tall corner guards.

Part No: PCPE-INFG1DS

*Only compatible with large corner guards*



### TOUGHBOOK G1 Mobility Bundle

Removable Carry Handle and Shoulder Strap and 2 brackets which fix to the G1 via the high corner guards – Plastic hardware

Part No: PCPE-INFG1B1

*Only compatible with large corner guards*



### User Harness

Can be used with Always On cases and other cases with D-rings on each corner

Weight: 0.2 kg / 0.4 lb

Part No: PCPE-INFUVA1



*All technical specifications are subject to change without notice.*

## CARRYING SOLUTIONS CONTINUED...

### Standard TOUGHBOOK G1 Case

Not dockable.

Size: 230 x 300 x 45 mm /  
9.1 x 11.8 x 1.8"

Weight: 400 g / 0.88 lbs.

Part Nos:

- PCPE-SYSLG11 With standard Nylon shoulder strap
- PCPE-SYSLG14 With breakable Velcro shoulder strap



### TOUGHBOOK G1 Dockable Case

Size: 230 x 300 x 45 mm /  
9.1 x 11.8 x 1.8"

Weight: 400 g / 0.88 lbs.

Part Nos:

- PCPE-SYSLG12 With standard Nylon shoulder strap
- PCPE-SYSLG15 With breakable Velcro shoulder strap



### Breakable Velcro Shoulder Strap

Size: 1170 x 30 mm / 46 x  
1.2" (1270 mm / 50" with  
clips)

Part No: PCPE-SYSSSB1



### Generic DuraStrap

Waterproof and cleanable  
shoulder strap

Size: 1524 x 25.4 x 6.4 mm /  
60 x 1 x 0.25"

Weight: 0.13 Kg / 0.28 lb

Part No: PCPE-INFGNDS



### Generic Holster

Accommodates  
TOUGHBOOK G1 with a  
case on. With 2 straps to  
secure device and 4  
mounting eyelets.

Part No: PCPE-SYSLVH1



*All technical specifications are subject to change without notice.*

## POWER MANAGEMENT SOLUTIONS

### Standard 6 Cell Battery Pack

Part No: FZ-VZSU84A2U



### Long-life 9 cell Battery Pack

Part No: FZ-VZSU88U



### Battery Charger & Adaptor

Charger and attachment  
adaptor for G1 Battery

Part No: PCPE-FZG1CA1

Includes:

- CF-VCBTB3W - Battery Charger



### AC Power Supply

Part No.: CF-AA6413A\*  
E/G/T/D

\*E: UK; G: Continental; T:  
Italian; D: Swiss



### Car Charger

EIAJ & TypeA both, 80W (12 -  
32VDC)

Part No: CF-LND8024 FD/BW\*

\*FD: with vehicle plug; BW: bare  
wire



### External 3-bay Battery Charger

With 120W AC Adapter.  
*Not compatible with easy  
release battery pack.*

Part No: PCPE-LNDG1C\*

\*E :UK; G: Continental



### Car Charger For Forklifts

Part Nos:

- PCPE-LNDFH11: 70-110
- PCPE-LNDFH32: 12-32V
- PCPE-LNDFH60: 20-60V



### Car Charger

EIAJ & TypeA both, 80W (12 -  
16VDC)

Part No: CF-LND80S-FD/BW\*

\*FD: with vehicle plug; BW:  
bare wire



All technical specifications are subject to change without notice.



## PRODUCTIVITY SOLUTIONS

### Mini USB Keyboard

US English

Part No: PCPE-KEYB



### Rugged USB Keyboard

Part No: PCPE-MMRK01\*

\*E: English; F: French; G: German



### Mini Rugged Bluetooth Keyboard

Part No: PCPE-ACDS\*

\*UK1: UK; FR1: French



### Mini Antibacterial Keyboard

Sealed IP67, Black

Part No: PCPE-ACCABK\*

\*1: UK; 3: FR; 4: DE



### Stylus Tether

Part No: FZ-VNTG11U



### TOUGHBOOK G1 IP55 Digitiser Pen

Part No: FZ-VNPG15U

For mk5 only.



### USB External Disc Drive

Part No:

- PCPE-FCDVR06 - Blu-ray
- PCPE-FCDVR05 - CD/DVD



*All technical specifications are subject to change without notice.*

## SECURITY AND PROTECTION SOLUTIONS

### Kensington Lock

Part No: PCPE-KENL0K1



### Protective Film for LCD

Replacement for protective film pre-installed on TOUGHBOOK

Part No: FZ-VPFG11U



### LCD Screen Cleaning Cloth

Part No: CF-VNC002U

MOQ: 10 pcs



## MOBILE PRINT SOLUTIONS

### PJ7 Series A4 Mobile Printers

Perfectly dimensioned for your briefcase or computer bag, PJ7 series of compact, direct thermal printers can also be easily mounted in your vehicle. Take it out on the road and make sure your clients and customers receive those all-important documents in an instant. Available with 300 dpi print resolution, and with USB, Bluetooth or Wi-Fi.

Part No.:    **PCPE-BRPJ763**    PJ763 A4 mobile printer, 300 dpi with USB & Bluetooth  
                 **PCPE-BRPJ773**    PJ773 A4 mobile printer, 300 dpi with USB, Wi-Fi and AirPrint



*All technical specifications are subject to change without notice.*

## PRODUCTIVITY SOLUTIONS

### Compact Wearable Barcode Scanner

Part Nos:

- PCPE-PGLSCN1 – Standard Range
- PCPE-PGLSCN2 – Mid Range



### Barcode Scanner Charging Cradle

With International plugs

Part No: PCPE-PGLCHR3



### Index Trigger Wrap - 3 Pcs. Pack

Part Nos:

- PCPE-PGLITSL - Left Hand, Size Small
- PCPE-PGLITML - Left Hand, Size Medium
- PCPE-PGLITLL - Left Hand, Size Large
- PCPE-PGLITSR - Right Hand, Size Small
- PCPE-PGLITMR - Right Hand, Size Medium
- PCPE-PGLITLR - Right Hand, Size Large



### Bluetooth Headset

Part No: PCPE-MODBTH1



### Headset Battery Charger – 10 bay

Part No: PCPE-MOD10BC



### Replaceable Batteries – 25 pack

Part No: PCPE-MODBAT1



All technical specifications are subject to change without notice.

## PROFESSIONAL SERVICES

### Custom BIOS Services

Part No: PCPE-PSBIO5G

### Autopilot Enrolment

Part No: PCPE-PSAUTOP

### SIM Installation

Part No: PCPE-PSSIMIN

### Information Management Bundle

IMEI, MAC, SIM, ASSET, Hardware Hash reporting.

Part No: PCPE-PSATAGB

### Solution Packaging

Up to 10 items packaged together in a box.

Does not include custom designed case.

Part No: PCPE-PSSPACK

### Custom Imaging

Part Nos:

- PCPE-PS20GIM - Image deployment per device (MOQ 30)
- Custom Image Creation - Price on request.

### Customer Branding

Logo badge on device casing or bezel.

Part No: PCPE-PSLOGOB

### Asset Tagging

Standard, using CPE label set.

Part No: PCPE-PSATAG1

### Custom Logistics

Part No: PCPE-PSCDL01

Price on Request.

*All technical specifications are subject to change without notice.*



## LIFECYCLE SUPPORT SOLUTIONS

### Extended Warranty

Panasonic's Extended Warranty provides an additional two years of warranty, helping you to minimise repair costs and maximise the life cycle of your Toughbook or TOUGHBOOK.

Part No.: FZ-LESPEW\* \*4 / 5

### Accidental Damage Warranty

Panasonic's Accidental Damage Warranty provides protection against any eventuality out in the field for up to 5 years, providing you and your workforce with complete peace of mind.

Part No.: FZ-LESPAD\* \*3 / 4 / 5 (4 & 5 year options include Extended Warranty)

### Smart Battery Warranty

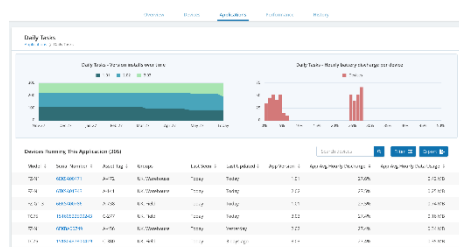
Smart Service Lite battery analytics, powered by B2M, monitor device battery health in real-time. Smart Service Lite will alert you when batteries deployed in the field reach a low capacity level so a replacement battery can be sent out in advance.

Part No.: CF-LESPBASS\* \*3 / 4 / 5



*All technical specifications are subject to change without notice.*

### TOUGHBOOK Smart Service

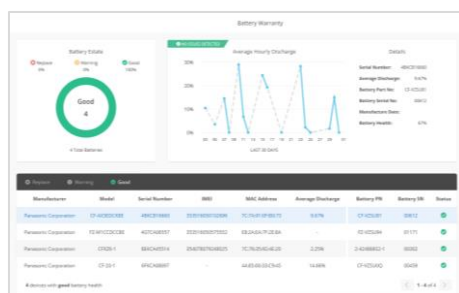


Real time analytics, powered by B2M Solutions, showing the health and performance of your estate of mobile devices, focussing on areas such as battery life, data usage, disruptions and connectivity. Enables the user to recognise patterns of usage and potentially pre-empt issues before they arise.

Part Nos.:

- **CF-LESPSSSM3** 3 year Smart Service self-managed licence
- **CF-LESPSSSM5** 5 year Smart Service self-managed licence

### Smart Battery Monitor

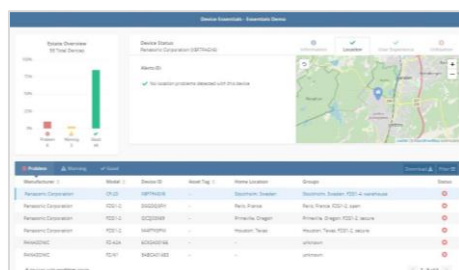


An additional "Smart" module that monitors battery usage and health in detail, focusing on battery serial numbers, the software allows the customer to track, identify and replace batteries before they impact productivity. With dashboard access and alerts.

Part Nos.:

- **CF-LESPBAEE1** 1 year Smart Battery Monitor software licence
- **CF-LESPBAEE3** 3 year Smart Battery Monitor software licence
- **CF-LESPBAEE5** 5 year Smart Battery Monitor software licence

### Smart Device Monitor



An additional "Smart" module that monitors device usage in more detail. Dashboard access provides information such as device location; user experience, including drop detection on Android devices and also enables alerts and geofences to be set up.

Part Nos.:

- **CF-LESPDAEE1** 1 year Smart Device Monitor software licence
- **CF-LESPDAEE3** 3 year Smart Device Monitor software licence
- **CF-LESPDAEE5** 5 year Smart Device Monitor software licence

## SOFTWARE SOLUTIONS – PREMIER PARTNERS



### Absolute Data and Device Security

Patented technology to centrally secure TOUGHBOOK devices for unrivalled endpoint security and data risk management.

*Part numbers available upon request.*

Website: <https://www.absolute.com/partners/oem/panasonic/>



### NetMotion Mobility

More than just a VPN, "Mobility" Mobile Performance Management software can dynamically maintain access to applications through changing network conditions, allowing mobile workers to remain productive anywhere their work takes them. Diagnostics option also available.

*Part numbers available upon request.*

Website: <https://www.netmotionsoftware.com/products/mobility>



### SOTI MobiControl

MobiControl is an Enterprise Mobility Management (EMM) solution with enhanced EMM features like application management, content management, location services and remote help.

*Part numbers available upon request.*

Website: <https://www.soti.net/products/soti-mobicontrol/>



### Sygic

Sygic Professional GPS Navigation works offline and features truck specific routing, itinerary with time windows and over 60 APIs for development with Android and Windows based apps.

*Part numbers available upon request.*

Website: <https://www.sygic.com/enterprise/professional-gps-navigation-sdk>

For more info on these software solutions, please refer to the co-branded data sheet [here](#).



## SOFTWARE SOLUTIONS – CERTIFIED PARTNERS



### StayLinked

StayLinked's SmartTE software provides a cost-effective way to take advantage of touchscreen devices with Terminal Emulation by transforming traditional "green screen" application screens into easy-to-use, graphical screens with no changes to the underlying enterprise applications.

For more information or to request a demo, visit:  
<https://www.staylinked.com/panasonic>



### Loqus

Loqus Fleet Ltd specialises in the provision of end-to-end Transport management systems providing organisations with the necessary tools to help them Plan, Execute and Monitor & Control work orders from initial order taking down to the last mile. Headquartered in Malta, the group employs a passionate team of high calibre software engineers supported by an experienced management team

Visit website: <http://openfleet.loqusgroup.com/>



### Acronis

Acronis sets the standard for cyber protection and hybrid cloud storage through its innovative backup, anti-ransomware, disaster recovery, storage, and enterprise file sync and share solutions. Enhanced by its award-winning AI-based active protection technology, blockchain-based authentication and unique hybrid-cloud architecture, Acronis protects all data in any environment – including physical, virtual, cloud, mobile workloads and applications – all at a low and predictable cost.

Visit website: <https://www.acronis.com>



### GPC Systems

GPC is an award-winning software house with over 25 years of experience working with a range of sectors across the globe. Driven by the needs of their customers in healthcare, transportation, police, logistics and local government, GPC strives to improve outcomes through the most efficient use of resources. GPC has in-depth experience creating solutions utilising 3D cameras, including the Intel® RealSense™ technology integrated into the TOUGHBOOK M1.

Visit website: <https://www.gpcsl.com/>

*All technical specifications are subject to change without notice.*





## ACCESSORY SUMMARY 1

Solution Type	Part Number	Description
Power Management	FZ-VZSU84A2U	Standard 6-Cell Battery Pack
	FZ-VZSU88U	Long Life Battery Pack
	FZ-VZSU97A2U	Battery Pack with Easy Release Tab
	CF-AA6413A* E/G/T/D	AC Power Supply (UK / Continental / Italy / Swiss)
	PCPE-FZG1CA1	Battery Charger (CF-VCBTB3W and attachment adapter for TOUGHBOOK G1 Battery)
	FZ-VCBAG11U	Charger Attachment adapter for TOUGHBOOK G1 Battery
	PCPE-LNDG1C* E/G	External 3-Bay Battery Charger with 120W AC Adaptor and power lead
	CF-LND8024 FD/BW	Car charger EIAJ & TypeA both, 80W (12 - 32VDC)
	CF-LND80-S FD/BW	Car charger EIAJ & TypeA both, 80W (12 - 16VDC)
	PCPE-LNDFH11	Car Charger (70-110V) For forklift
	PCPE-LNDFH32	Car Charger (12-32V) For forklift
	PCPE-LNDFH60	Car Charger (20-60VDC) For forklift
Keyboards	PCPE-KEYB	USB Keyboard (US English)
	PCPE-MMRK01* E/F/G	Rugged USB Keyboard
	PCPE-ACDS* UK1; FR2	Mini Rugged Wireless Keyboard
	PCPE-ACCABK* 1/3/4	Mini Anti-Bacterial Keyboard
Styluses	FZ-VNTG11U	Stylus Tether
	FZ-VNPG15U	TOUGHBOOK G1 IP55 Digitiser Pen
Peripherals	PCPE-FCDVR06	External USB Blu-Ray Drive
	PCPE-FCDVR05	External USB CD/DVD Drive
	PCPE-MOVBTH1	Bluetooth Headset
	PCPE-MOD10BC	Bluetooth Headset 10 Bay Charger
	PCPE-MOVBAT1	Bluetooth Headset
Protection & Security	PCPE-KENLOK1	Kensington Lock Replaceable Batteries – 25 pack
	FZ-VPFG11U	LCD Protective Film
	CF-VNC002U	LCD Screen Cleaning Cloth

All technical specifications are subject to change without notice.

## ACCESSORY SUMMARY 2

Solution Type	Part Number	Description
Carrying Solutions	FZ-WSTG111	TOUGHBOOK G1 Replacement Rotating Hand Strap
	PCPE-INFG1A1	TOUGHBOOK G1 Always-On
	PCPE-INFG1B1	TOUGHBOOK G1 Mobility Bundle
	PCPE-INFG1DS	TOUGHBOOK G1 KV DuraStrap Bundle
	PCPE-INFG1X1	TOUGHBOOK G1 X-Strap
	PCPE-INFUVA1	User Harness
	PCPE-INFGNDS	Generic DuraStrap
	PCPE-SYSLG11	Standard TOUGHBOOK G1 Case with Standard Nylon strap
	PCPE-SYSLG14	Standard TOUGHBOOK G1 Case with Breakable Velcro strap
	PCPE-SYSLG12	TOUGHBOOK G1 Dockable Case with Standard Nylon strap
	PCPE-SYSLG15	TOUGHBOOK G1 Dockable Case with Breakable Velcro strap
Docking Solutions	PCPE-SYSSSB1	Breakable Velcro shoulder strap
	PCPE-SYSLVH1	Generic Holster
	FZ-VEBG11AU	Desktop Cradle with Dual Display
	CF-CDSG1SD0* 1/2	TOUGHBOOK G1 Slim Vehicle Dock
Mobile Printing Solutions	PCPE-GJG1V0* 1/2/5	TOUGHBOOK G1 Standard Vehicle Dock
	PCPE-HAVG1* 01/02	TOUGHBOOK G1 Vehicle Dock
	PCPE-BRPJ763	PJ763 A4 mobile printer, 300 dpi with USB & Bluetooth
	PCPE-BRPJ773	PJ773 A4 mobile printer, 300 dpi with Wi-Fi & AirPrint

*All technical specifications are subject to change without notice.*

## ACCESSORY SUMMARY

Solution Type	Part Number	Description
Professional Services	PCPE-PSBIOSG	Custom BIOS Service – Gold
	PCPE-PS20GIM	Image deployment per device (MOQ 30)
	PCPE-PSSIMIN	SIM Installation
	PCPE-PSATAG1	Asset Tagging
	PCPE-PSATAGB	Information Management Bundle
	PCPE-PSAUTOP	Autopilot Enrolment
	PCPE-PSLOGOB	Custom logo badge
	PCPE-PSSPACK	Solution Packaging
	PCPE-PSCDL01	Customised Deployment / Logistics
	PCPE-PSBTM01	Bespoke Training Material
Smart Services	CF-LESPSSSM3/5	Smart Service self managed licence – 3 or 5 years
	CF-LESPBAEE1/3/5	Smart Battery Monitor software licence – 1, 3 or 5 years
	CF-LESPDAEE1/3/5	Smart Device Monitor software licence – 1, 3 or 5 years
Lifecycle support solutions	FZ-LESPEW* 4/5	Extended Warranty
	FZ-LESPAD* 3/4/5	Accidental Damage Warranty
	CF-LESPBASS* 3/4/5	Smart Battery Warranty

Panasonic and Toughbook are brand names and registered trademarks of Panasonic Corporation. Intel, the Intel logo, Intel Core, Intel vPro, Core Inside and vPro Inside are trademarks of Intel Corporation in the U.S. and other countries. Microsoft® and Windows® are registered trademarks of Microsoft® Corporation of the United States and/or other countries. All rights reserved. All other brand names shown are the registered trademarks of the relevant companies.

Mobile Solutions Business Division – Europe (MSBDEU), Panasonic System Communications Company Europe (PSCEU), Panasonic Marketing Europe GmbH, Hagenauer Straße 43, D-65203 Wiesbaden (Germany).